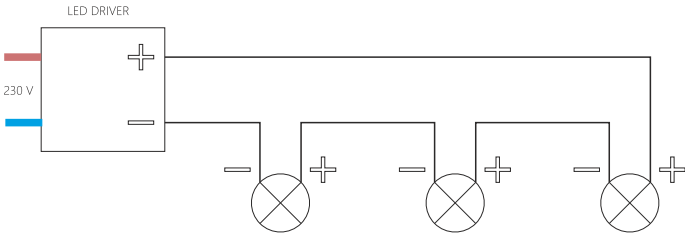




# FIFTY-FIVE SUSPENSION SHORT MANUAL

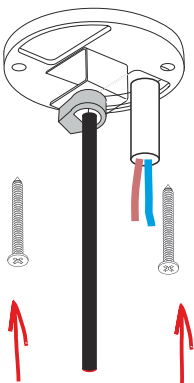
CONSTANT CURRENT LAMPS MUST BE INSTALLED IN SERIAL CONNECTION



## 55 SUSPENSION SHORT 350 mA LAMP WITH CEILING ROSETTE 50mm

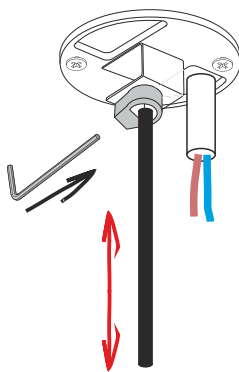
1

fixing to ceiling



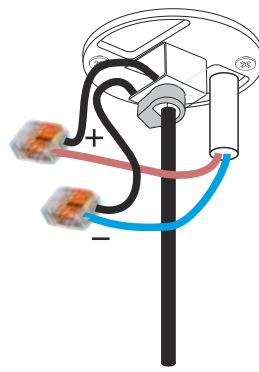
2

Set lamp high



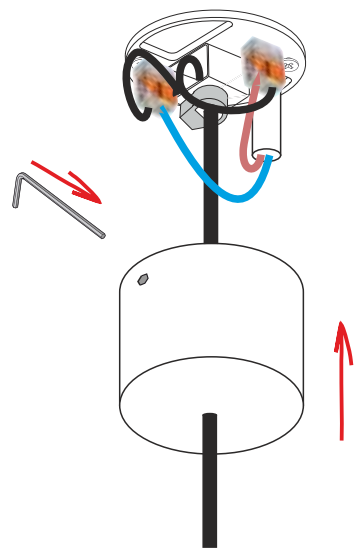
3

connect cable

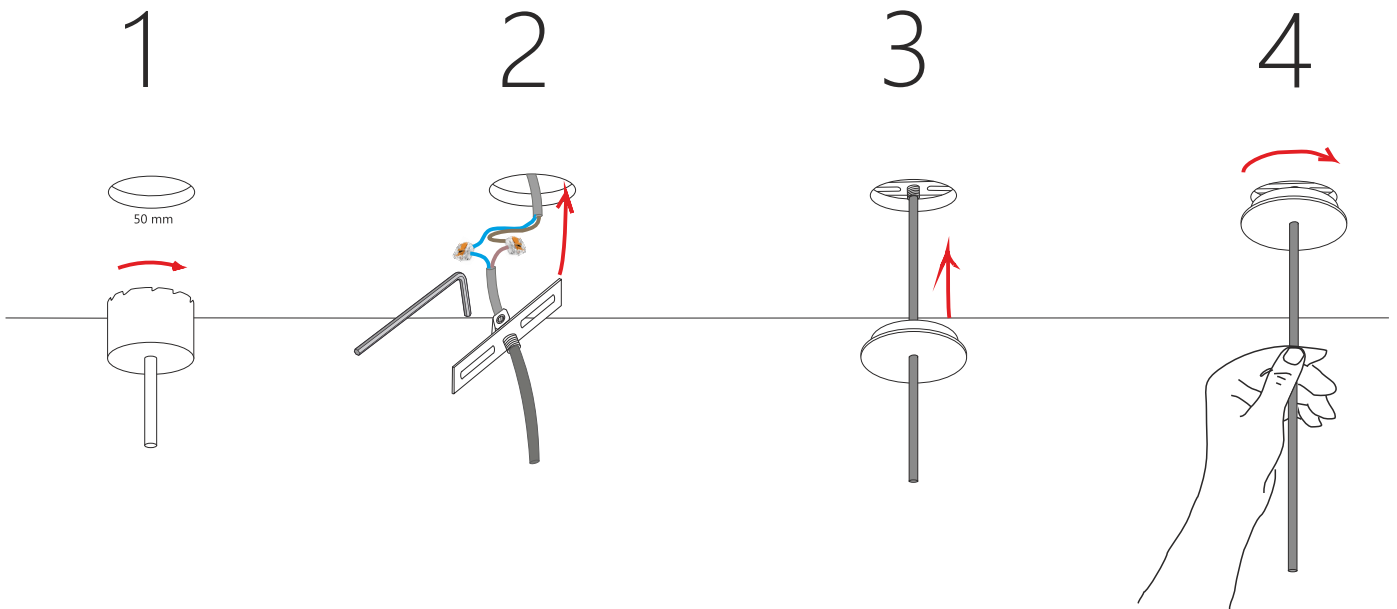


4

fixing rosette cover



55 SUSPENSION SHORT 350 mA LAMP WITH FALSE CEILING ROSETTE



55 SUSPENSION SHORT 220V LAMP WITH INTEGRATED LED DRIVER

