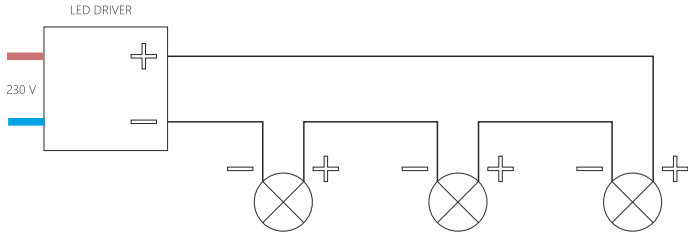




25 SUSPENION BRASS MANUAL

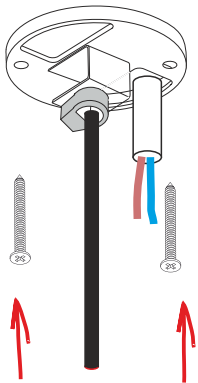
CONSTANT CURRENT LAMPS MUST BE INSTALLED IN SERIAL CONNECTION



25 SUSPENION BRASS 350 mA LAMP WITH CEILING ROSETTE 50mm

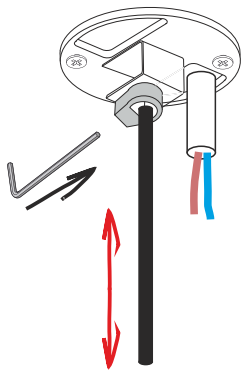
1

fixing to ceiling



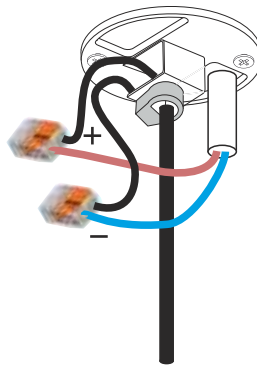
2

Set lamp hight



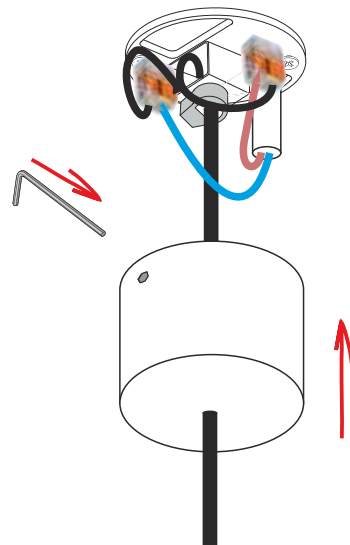
3

connect cable

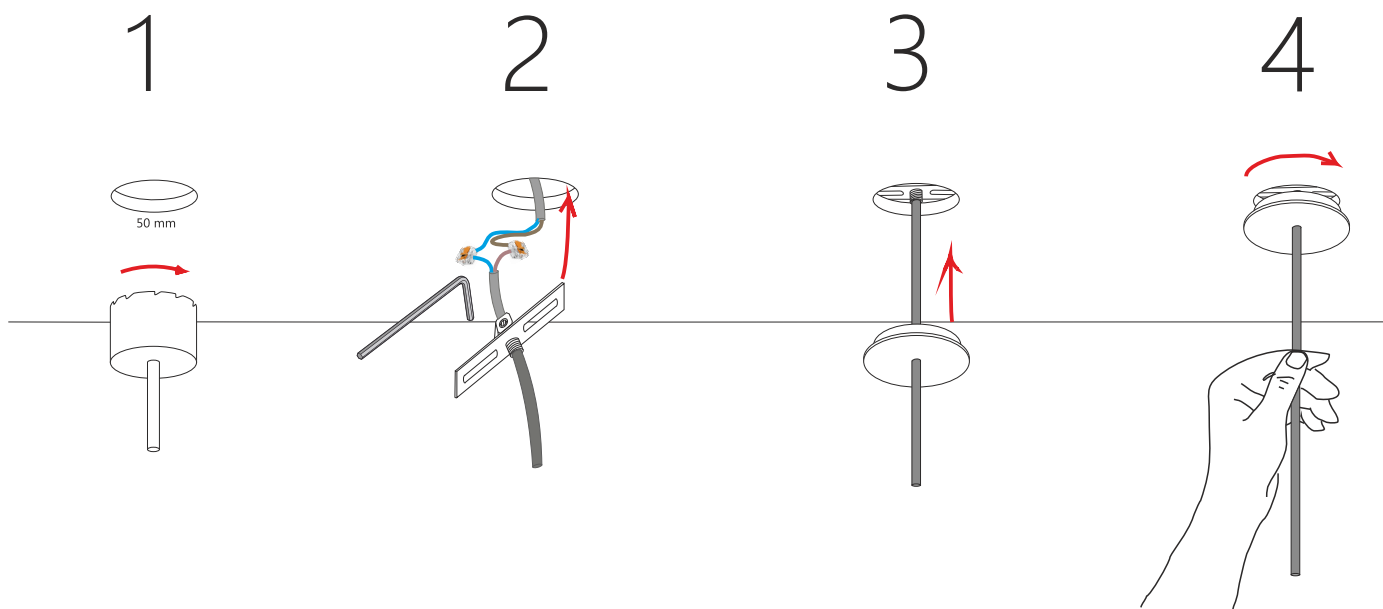


4

fixing rosette cover



25 SUSPENION BRASS 350 mA LAMP WITH FALSE CEILING ROSETTE



25 SUSPENION BRASS 220V LAMP WITH INTEGRATED LED DRIVER

